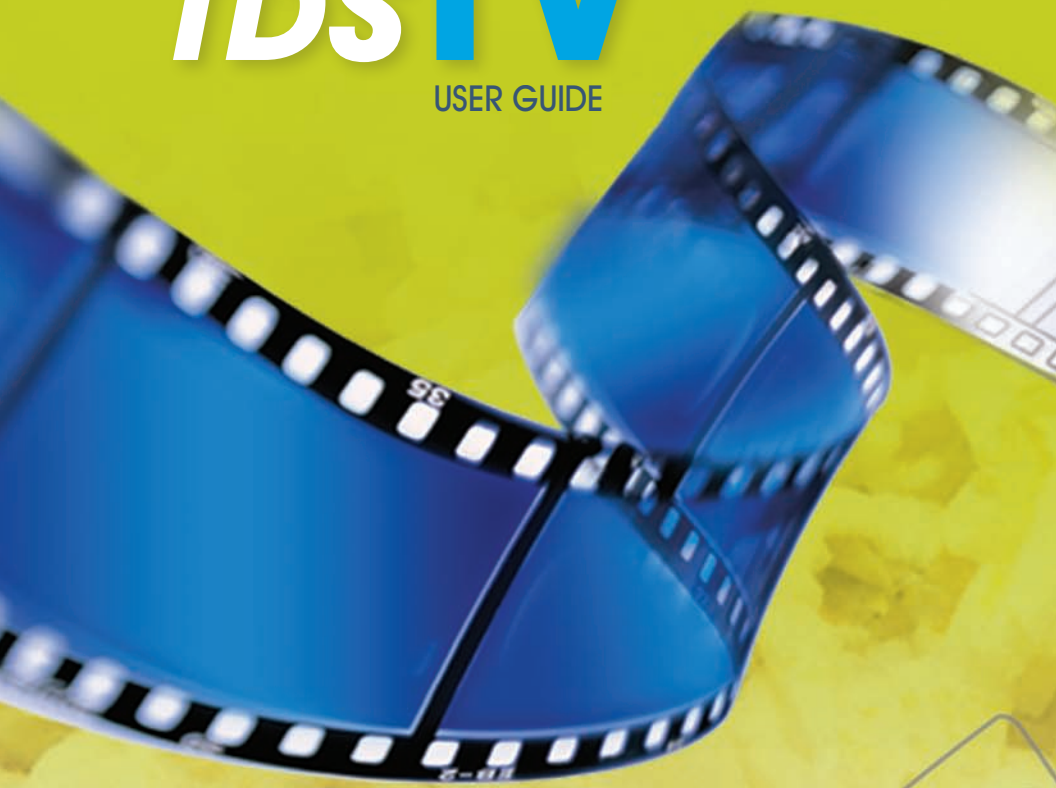


# TDS TV<sup>®</sup>

USER GUIDE



Broadband. [Digital TV](#). Phone.

*Del Webb<sup>®</sup>*

**615-773-9033**

[www.tdstv.com](http://www.tdstv.com)

# WELCOME TO TDS TV®!

We're happy to have you as a customer.

Now you can enjoy hundreds of the best television and audio channels, all broadcast in 100% digital format. That means better picture and sound quality for your viewing and listening enjoyment.

## We're Committed to You.

TDS is committed to customer satisfaction. So, if you ever encounter issues or have questions about TDS TV, please call **615-773-9033**. A TDS representative will gladly provide the personal assistance you need—and deserve!

## We're Here For You.

And remember, TDS is more than a TV provider—we're a Broadband and phone company too. So, for all your communications needs, turn to TDS. We'll provide you with reliable services at affordable rates!

Thanks again for choosing TDS. We really appreciate your business.

# TABLE OF CONTENTS

|   |    |
|---|----|
| <b>Introduction</b> .....                   | 1  |
| <b>How It Works</b>                         |    |
| Set-Top Box .....                           | 2  |
| Remote Control .....                        | 5  |
| System Features .....                       | 10 |
| On-Screen Guide .....                       | 10 |
| Settings .....                              | 10 |
| <b>Using TDS TV</b>                         |    |
| Turning the System On .....                 | 11 |
| Selecting an Operating Mode .....           | 11 |
| Security Measures .....                     | 11 |
| On-Screen Menu .....                        | 12 |
| On-Screen Guide .....                       | 13 |
| Selecting Channels .....                    | 15 |
| Setting Parental Controls .....             | 16 |
| Accessing Vault .....                       | 20 |
| Changing Settings .....                     | 25 |
| Favorites .....                             | 28 |
| Searching the Guide .....                   | 31 |
| <b>System Password and PIN</b>              |    |
| Changing System Password .....              | 32 |
| Changing/Disabling PIN .....                | 33 |
| <b>Troubleshooting Guide</b> .....          | 35 |
| <b>Emergency Alert System</b> .....         | 38 |
| <b>Universal Remote Control Codes</b> ..... | 39 |

# INTRODUCTION

With TDS TV entertainment is made easy!

## ***Now you'll enjoy:***

- 100% digital channels
- Superior picture and sound quality
- Universal Remote Control—one remote controls your TV, DVD player, VCR, and Home Theater System
- On-screen Interactive Program Guide (IPG) for customized viewing and program scheduling
- Parental controls—take the worry out of what's on TV

## HOW IT WORKS

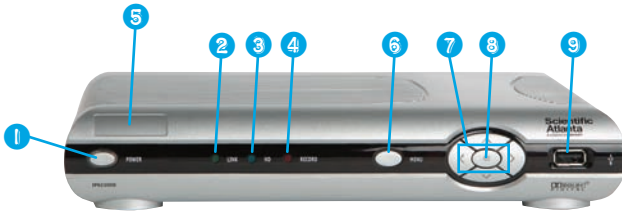
TDS TV receives digital signals and transmits them through a set-top box (STB). Use the Universal Remote Control (included) to access and manage your system's services.

### SET-TOP BOX

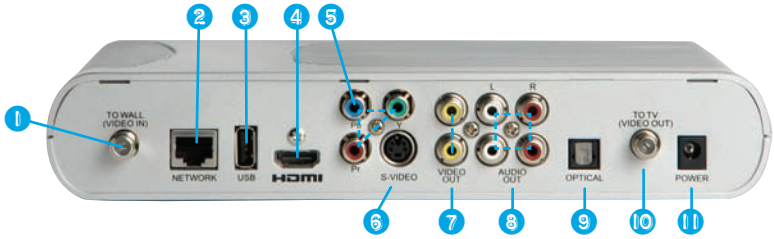
There are two set-top box models available, the Scientific Atlanta 330 and the Scientific Atlanta 430. Both models can be enabled to receive HD channels, while the Scientific Atlanta 430 features a Digital Video Recorder (DVR).

The following details are provided for informational purposes only. Do not change or alter any of the equipment installed by TDS.

At times, TDS may need the MAC1 address for your set-top box. This will allow us to provide new services remotely, without sending a technician to your home. The 12-character MAC1 address is printed on the label on the bottom of the STB.



- |   |                  |  |
|---|------------------|--|
| 1 | <b>Power</b>     | Turns the set-top box device on or places it in standby. The LED is green. |
| 2 | <b>Link</b>      | Indicates network link status. The LED is green.                           |
| 3 | <b>HD</b>        | Indicates that a high-definition program is in progress. The LED is blue.  |
| 4 | <b>Record</b>    | Indicates that a program is being recorded.                                |
| 5 | <b>IR Sensor</b> | Receives a signal from the Universal Remote Control.                       |
| 6 | <b>Menu</b>      | Access the TDS TV On-Screen Guide.   |
| 7 | <b>Arrows</b>    | Navigate the On-Screen Guide and menus.                                    |
| 8 | <b>OK</b>        | Selects the current item.  |
| 9 | <b>USB Port</b>  | Not used at this time.   |



- 
- 1 To Wall (Video In)** Connect the set-top box device to in-house coax wiring, if applicable. This signal is used to receive an Ethernet-over-coaxial signal.
- 
- 2 Network** Connect to the Ethernet (CAT-5) network in your home, if applicable.
- 
- 3 USB Port** Connect external USB equipment approved by your service provider to this port.
- 
- 4 HDMI** Connect an HDTV HDMI™ (High Definition Multimedia Interface) cable from the HDTV to the HDMI port. HDMI supports both digital audio and video.
- 
- 5 PrPbY** Connect the set-top box device to the component video input (PrPbY) on the high definition TV (HDTV).
- 
- 6 S-Video** Connect an S-Video cable to send an S-Video signal to your TV or VCR. This signal is standard definition (SD) but higher quality than other SDTV connections.
-

- 
- 7 Video Out** Connect to either a VCR or connect to another set of inputs (composite) on your HDTV or SDTV.
- 
- 8 Audio Out (L/R)** Connect RCA-type cables to Audio Out to send analog audio signals (left and right) to a TV with stereo inputs or to a stereo amplifier.
- 
- 9 Optical** Connect an optical cable to send a digital audio signal to a surround-sound receiver or other digital audio device.
- 
- 10 To TV (Video Out)** Connect to TV. This is a channel 3/4 output. You must set the channel on your TV to the correct channel (either channel 3 or 4).
- 
- 11 Power** Connect the DC output of the AC power adapter (provided) to deliver power to the set-top box.
- 

## REMOTE CONTROL

TDS TV includes a Universal Remote Control, which is programmed to work with your TDS TV set-top box. Use the remote to turn power on/off, navigate through channels, and move within screens. Selections are confirmed by pressing OK. The STB receives signals from the remote. So be sure to point the remote at the STB.



## Programming Your Universal Remote

The Universal Remote Control can be programmed to operate other devices such as your TV, DVD, Home Theater System, or VCR.

1. Refer to the code tables at the end of this guide (pg. 38) for the codes needed to program your remote.
2. Turn on the device that you want to assign to a mode key.
3. Press and hold the appropriate mode key (TV, DVD, or AUX) on the remote, then press and hold the OK key.
4. Release both keys and the mode keys will flash twice.
5. Enter the first 4-digit setup code for device using the number keys (0-9) on the remote. The mode key will flash three times to indicate that the code entry was accepted.
  - \* When an invalid code is entered, the selected mode key will display a long flash to indicate that you have not entered the code correctly.
  - \* If the remote times-out before you complete the code setup, you will need to start over. This is indicated by one long flash of the red LED.

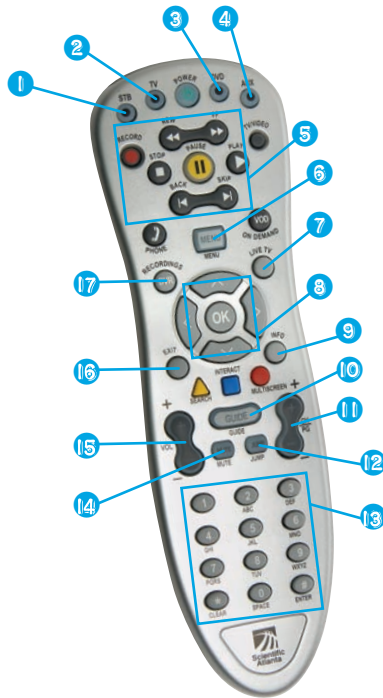
6. Point the remote at the device, and press POWER to test the device.

7. Did the device power off?

\* If yes, write down the code that worked in this guide. You may need it again if the device code is accidentally erased.

\* If no, repeat this procedure from step 3 using a different setup code.

Common uses for remote keys are noted in the step-by-step procedures throughout this guide.



- 1
**STB**      Controls set-top box
  
- 2
**TV**      Controls TV
  
- 3
**DVD**      Controls DVD player
  
- 4
**AUX**      Controls auxiliary components (e.g., stereo receiver, VCR, etc.)
  
- 5
**DVR/DVD/VCR Controls**      Controls playback
  
- 6
**Menu**      Displays menu of services or options
  
- 7
**LIVE TV**      Returns to viewing live TV
  
- 8
**Arrows/OK**      Navigates menus and guides/

- selects current item
- 9 INFO** Displays program details
- 10 Guide** Displays channel listings/favorites
- 11 Channel Buttons** Changes channels, up or down
- 12 JUMP** Returns to the last channel viewed
- 13 Number Buttons** Enters a channel number, text, PIN, or password
- 14 MUTE** Turns sound off/on
- 15 Volume Buttons** Changes volume, up or down
- 16 EXIT** Returns to previous feature
- 17 DVR Recordings** Accesses recorded programming

## **SYSTEM FEATURES**

Use the on-screen Menu to access system features like Digital TV, Guide, Movies, Music, and Settings.

## **ON-SCREEN GUIDE**

The TDS TV On-Screen Guide provides the most up-to-date program information in an easy-to-use, intuitive format. Use visual cues on the Guide to view, browse, and search program listings, as well as purchase pay-per-view (PPV) programs.

You can access up to one week of programming information with the On-Screen Guide. The “picture in guide” function allows you to scan the guide while watching a program.

## **SETTINGS**

Change your system Personal Identification Number (PIN), manage Favorites, maintain Parental Controls, and adjust System Settings in one location. You can alter and use the Purchase and System PINs as necessary.

# USING TDS TV

## TURNING THE SYSTEM ON

- On the remote, press TV, then Power (the TDS TV system will begin loading)

## SELECTING AN OPERATING MODE

You must ensure that your TDS TV Universal Remote Control is in the correct operating mode:

- To control your TDS TV set-top box, press the STB button on the remote control
- To control your TV, press the TV button
- To control your VCR or DVD player press the AUX button

## SECURITY MEASURES



The screenshot shows a blue-themed settings interface. At the top, there's a 'Settings' header with a green tab. Below it are three tabs: 'Preferences', 'Users', and 'Edit User - Steve'. The 'Users' tab is active. The 'Edit User - Steve' section contains several input fields: 'Password', 'New Password', and 'Confirm Password' (all with masked characters); 'PIN', 'New Pin', and 'Confirm PIN' (all with masked characters). There is a checked checkbox labeled 'Enable PIN'. At the bottom right, there are two buttons: 'Submit' and 'Cancel'.

To ensure you have control over your TDS TV

account, TDS provides you with:

- A 4-digit numeric password that is used to access various settings
- A numeric personal identification number (PIN) used to make purchases

## ON-SCREEN MENU



Navigate TDS TV using the on-screen Menu, which displays a list of main features available on the system.

1. Press MENU on the remote.
2. Use the arrow keys and press OK to choose a Menu option. The system jumps to the selected feature.

## ON-SCREEN GUIDE



Access detailed program information, locate your favorite shows, and more.

### Understanding Color Coding

The Guide is color-coded to let you easily differentiate the type of programs available.

*Colors include:*

| Description         | Box    | Channel                      |
|---------------------|--------|------------------------------|
| Movie               | Purple | Green (Non-PPV)<br>Red (PPV) |
| Regular Programming | Blue   | Green (Non-PPV)<br>Red (PPV) |



## Viewing Program Information

1. Press GUIDE to access the program list
  - Use the navigational arrow keys to browse programs. The Guide advances in 30 minute increments, displaying future programming. A highlight appears around a selected channel.
  - Pressing the SKIP button advances the program listing 12 hours. The BACK button returns you to current date and time.
  - Use CH +/- to preview channels in the upper right corner from the Guide.
2. Highlight a program.
3. Press OK to change to the channel or press INFO to display program information. Press INFO again to clear information and return to the Guide.
4. Use the arrow keys and press OK to browse other channels in the Guide.

## Accessing Audio Channels

TDS TV offers a variety of audio channels to TDS TV Expanded Plus customers. The On-Screen Guide displays basic program information for an individual audio selection as channels are changed. The system also displays title, track, and artist information. To access audio channels:

1. Press GUIDE and use one of the following methods to view/select a music channel:
  - Press CH +/-.
  - Use the numeric keypad to type audio channel number.

## SELECTING CHANNELS

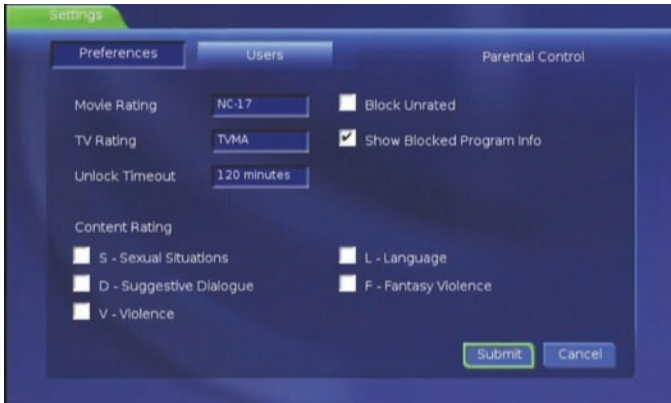
**NOTE:** If the remote does not function properly, ensure it is accurately programmed for compatibility with your brand of television.

*To view a channel or change channels, use one of the following methods:*

- Enter the channel number (e.g. 04 or 812) and press ENTER using the numeric keypad on the remote.
- Press CH +/-.
- Press GUIDE and use the navigation arrows to browse listings.
- Press JUMP to return to previous channel.

Program information (channel, network, title, air-time, duration, and description) appears briefly as channels change. This information appears depending on system settings.

## SETTING PARENTAL CONTROLS



TDS TV includes advanced parental control features that enable you to restrict the types of programming that can be viewed. These controls can be set for your entire account or you can create additional TDS TV accounts, each with their own set of controls. For example, you can create accounts for your children that have more restrictions. These additional accounts are known as sub accounts.

### Setting Parental Controls for the Main Account

1. Press MENU on the remote control.
2. Select Settings and press OK on the remote.
3. Enter your password and press OK on the remote.
4. The Settings screen will appear.

5. Select the Parental Controls checkbox and press OK to enable parental controls.
6. Select Edit next to Parental Controls. It will prompt you to save changes. Select Yes and press OK on the remote.
7. Click each category and use the arrows to scroll through options. Press OK to to save each setting.
  - Movie Rating
  - TV Rating
  - Unlock Timeout
  - Block Unrated
  - Show Blocked Program Info
  - Content Ratings
    - S** Sexual Situations
    - D** Suggestive Dialogue
    - V** Violence
    - L** Language
    - F** Fantasy Violence

When finished, select Submit and press OK to save and exit.

### **Setting Up Sub Accounts**

The main user can create and maintain sub accounts from the Settings menu. User IDs, passwords, and parental control settings can be configured for each sub account.

- 1.** Press MENU on the remote control.
- 2.** Select Settings and press OK on the remote.
- 3.** Enter your password and press OK on the remote.
- 4.** The Settings screen will appear.
- 5.** Check the Require Login box to enable user accounts.
- 6.** Select the Users tab at the top of the screen and press OK on the remote. It will prompt you to save changes. Select Yes and press OK on the remote.
- 7.** Select ADD and press the OK button to add a new user.
- 8.** Select the login field and press OK to bring up the onscreen keyboard. Enter the new user name and click Done when finished.
- 9.** Enter the user's password in both the New Password and Confirm Password fields.
- 10.** Enter an allowance if the user is allowed to purchase pay-per-view items.
- 11.** Enter the PIN for the main account.
- 12.** Check the Enable Caller ID box if the new user should see Caller ID pop-up messages.

13. Select Continue and press the OK button.
14. Continue by setting the desired parental controls.
15. Select Submit and press OK on the remote when done. The new user account is created!
16. To use the new sub account, go to the Main Menu and select Sign Out.
17. At the sign-in screen, change the user by highlighting the user field and clicking OK. Use the up and down arrow keys to change users. Press OK when done.
18. Enter the user's password by highlighting the password field and typing in the password. Click Sign In when you are finished.

**NOTE:** Parental controls must be enabled on the main account for the feature to be active on sub accounts.

## ACCESSING VAULT



The Vault stores purchased programming, a list of your scheduled reminders and auto-tune events, messages from TDS, and a Caller ID log.

*To access stored information:*

1. Press MENU on the remote.
2. Highlight Vault and click OK.
3. Highlight the category you wish to access and click OK.

### **Pay-Per-View (PPV)**

PPV lists purchased movies and events available for purchase.

#### **To rent a PPV movie/event**

1. Press GUIDE on the remote.
2. Navigate to a PPV channel you want

to watch.

3. Press OK on the remote.
4. A box will appear that asks "What would you like to do". If you are within the allotted start window (the first 10 minutes) you can select Buy PPV. If you are late for the start of the show, you can select Buy Next PPV.
5. After you select Buy PPV, a pop-up screen with information (title, cost, start time) about the event will appear. You'll be asked to enter your PIN. You may also check a box to share the video on other set-top boxes on your account.
6. Press OK after you enter PIN. Or, select the on-screen button marked "Buy" and press OK (cancel is also an option).

When you order a PPV event in advance, the set-top box will either tune to the PPV channel automatically at the correct time, or a pop-up window will notify you of the PPV event. The notification depends on the reminder and auto-tune options you have set up. To adjust, visit the PPV events screen in the Vault menu.

### **Caller ID**

Caller ID offers access to a log of all telephone calls you have received. You can review and



delete individual entries.

1. In Vault, highlight Caller ID and press OK on your remote. A list of your received calls appears.
2. To delete, highlight the Caller, press OK.

## Setting Reminders

### Set Up

1. Select a program in the Guide. Highlight the program listing and press OK.
2. Highlight Set Reminder and press OK. You will then be returned to the Guide.
3. The program listing will show an icon next to the program name.
4. *If you chose:*

**Reminder**—A few minutes before your program comes on, a box will appear on your screen, telling you that you have a reminder. Press INFO to display the reminder. Highlight the button showing the program name. Press OK to tune to that program or highlight Cancel and press OK to ignore the reminder.

**Autotune**—Just before the program begins a message will pop up, giving you the option

to tune in or cancel. You can choose either option or just wait. The pop-up will go away and the system will tune you to the correct channel.

### **Canceling a Reminder**

1. Select the program to cancel by highlighting it. Then press OK.
2. Arrow up or down to Cancel Reminder. Then press OK and you'll be returned to the Guide.

### **Messages**

Messages may inform you of promotional offers, upcoming pay per view events, and service upgrades. Whenever you receive a new message from TDS, an alert will appear on your screen informing you of the new message.

*To read the message:*

1. Press INFO on your remote to display the message.
2. Highlight and press OK. A list of all available messages appears.
3. To read the message, highlight and the full message will be displayed in the Info Area.

*To ignore the alert:*

1. Press Exit to ignore the alert and view the message.
2. Highlight Delete and press OK to remove the entry, or Cancel if you want to keep it.

**Video Features** (Not Currently Available to TDS TV customers.)

Video provides access to Video-On-Demand rentals that you've already purchased.

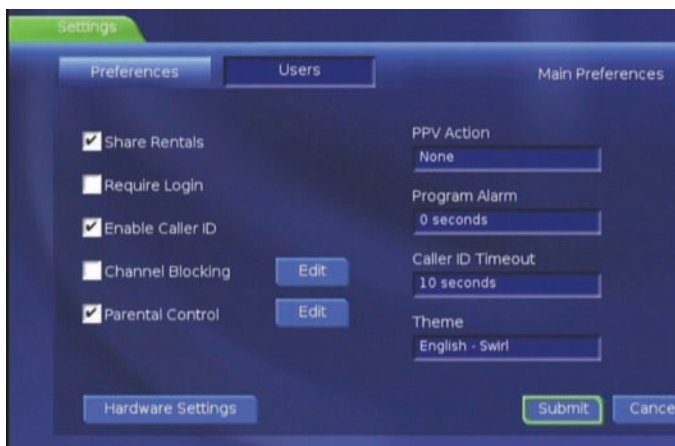
**Pay-Per-Block** (Not Currently Available to TDS TV customers.)

All-day PPV movies that you've purchased are located here.

**Sports Packages** (Not Currently Available to TDS TV customers.)

Any special sports packages you purchase are located here.

## CHANGING SETTINGS



Control your TDS TV video service. Here you can change how alerts appear on your screen, create parental controls, and block channels.

*The options on the Settings screen are:*

### **Share Rentals**

To share purchased PPV events/programs with sub users (other set-top boxes), check the box (use OK to check/uncheck)

### **Require Login**

To turn login on/off, check the box.

### **Enable Caller ID**

Enable or disable the Caller ID pop up.

### **Channel Blocking**

To block channels, check box, then click EDIT. Use arrow keys to move to channel selection you want to block, click OK to block channel.

Continue this process until you have selected all channels that you want blocked. Click UPDATE. On Preferences tab, click SUBMIT to finalize changes.

### **PPV Action Field**

Set a reminder when PPV is ready. Options are: none, reminder, and auto-tune.

### **Program Alarm**

Allows you to set the reminder time.

### **Caller ID Timeout Field**

Use left/right arrows to select appropriate time for displaying the Caller ID alert box: 5—50 seconds (in 5 second intervals).

### **Theme**

You are not allowed to change this setting.

## **Hardware Settings**



Optimize video output based on the video cable set up.

1. Press MENU on the remote.
2. Select Settings, enter your Password and press OK.
3. Select Hardware Settings and press OK.
  - **RF Output Channel**  
Click on box and it lets you change the channel that you want your TV set to if using the coax connection.
  - **Audio Language**
  - **HDMI Comp. Resolution**
  - **Frame Format**—Set your TV format to enable the most optimal image for your display; select the appropriate option for your TV to preserve the complete image.  
*Options include:*
    - 4:3** Crops the left and right sides of the image and displays a 4:3 image.
    - 4:3 Letter box** Shrinks the image vertically to preserve its aspect ratio on a 4:3 display and puts black bars at the top and bottom of the image.
    - 16:9** The image is not manipulated, so it displays in the original format.
  - **CC Overlay Render**—Close captioning on STB. Check this if you want the STB to automatically be set to show close

captioning on the screen.

- **CC Channel/Service Number**—Please leave as set up.

## FAVORITES



Create, edit, and delete a list of your most frequently viewed and favorite channels. Use the default favorites lists (All or Subscribed) or create your own (up to 5 unique lists.)

### Set Up Favorites Lists

1. Press MENU on the remote.  
(The Main menu displays.)
2. Select Favorites, press OK.
3. Select Create, press OK.
4. In highlighted name box, click OK button to get keypad. You must press Clear All on keypad before you begin entering the name. When you have completed the

name click DONE.

5. Browse the list of channels to either select or deselect each channel.
6. Press OK on the remote to add the highlighted channel to your Favorites list. A "heart" symbol appears next the selected channel when it has been added to your Favorites list.
7. Select Update and press OK when you've completed.

**NOTE:** Pressing the GUIDE button will toggle through the names of your favorites lists. Next to the "heart" in the information bar, the name of the current favorites list is displayed. If a channel is selected by typing in the channel number directly, and it's not one of your favorites, the heart is displayed with a "---" to indicate that you are on a channel which is not part of the current favorites.

### Edit Your Favorites

1. Press MENU on the remote.
2. Select Favorites, click OK, then Edit.
3. Choose the list to rename or edit, then click OK.

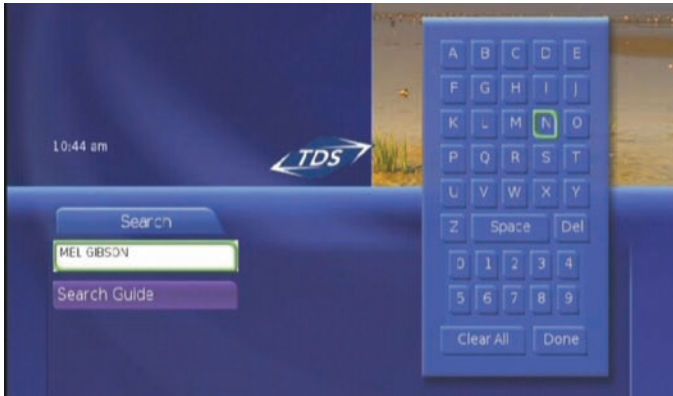


4. If you are changing the list name, you must click OK while highlighted box is in the name, then the on-screen keypad appears to rename the list. When you have completed renaming the list, click on DONE.
5. Browse the list of channels to either select or deselect each channel.
6. Select Update and click OK to complete the changes and exit.

### **Deleting Favorites**

1. Press MENU on the remote.  
(The Main menu displays.)
2. Select Favorites, click OK.
3. Choose Delete.
4. Select the list to delete and select Yes.  
The Delete Favorites screen is updated and reflects the removed Favorite.

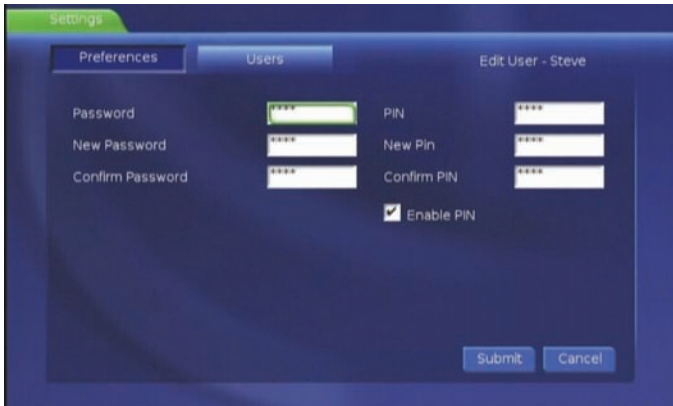
## SEARCHING THE GUIDE



Search allows you to enter the name (or partial name) of a program you are looking for.

1. Press SEARCH and OK on the remote.
2. The Search screen will display, press OK on the remote and the on-screen keypad displays.
3. Use the arrow keys to navigate letters and numbers to spell search term/word, and select Done.
4. Click on SEARCH GUIDE, and select Extended (EPG) or Quick (QPG) to begin your search.
5. The Search feature queries both titles and descriptions of the keyword you are searching for.

# SYSTEM PASSWORD & PIN



## CHANGING SYSTEM PASSWORD

Create and modify your Password for System Settings.

1. Press MENU on the remote.
2. Select Settings, press OK, enter your Password and press OK.
3. Use right arrow key to go to users tab and press OK.
4. Default selection is Main Account on the User Tab.
5. Select Edit and press OK.
6. Enter your old password using the remote.
7. Enter your new password using the remote, and re-enter to confirm.

8. Enter your PIN.
9. Select Submit and press OK to complete the Password modification and return to the Menu. A confirmation message appears; after a few seconds, the system returns to the Menu.

## **CHANGING OR DISABLING THE PIN**

Change or disable the PIN for purchases.

1. Press MENU on the remote.
2. Select Settings, press OK, enter your Password and press OK.
3. Use right arrow key to go to users tab and press OK.
4. Default selection is Main Account on the User Tab.
5. Select Edit and press OK.
6. Enter your old PIN, then your new PIN, and re-enter to confirm.
7. If you want the PIN enabled, make sure the Enable PIN box is checked. If you want the PIN disabled, make sure to deselect the Enable PIN box.
8. Select Submit and press OK to complete

the PIN modification and return to the Menu. A confirmation message will appear. After a few seconds, the system returns to the Menu.

# TROUBLESHOOTING GUIDE

## **No Picture** (e.g., snowy or black screen)

- Turn the TV off and back on.
- Verify the input is correct on your TV. If you are using coaxial cable, make sure your TV is tuned to channel 3.
- Verify all cables are securely connected to the back of the set-top box and the television.
- Check the power source to your TV and the set-top box.
- Unplug the power source to the set-top box for 30 seconds. Then, plug it back in and wait about 5 minutes for the set-top box to reboot. (Note: Allow 10–15 minutes for a DVR set-top box to reboot.)

## **Some Channels Appear to be Missing**

- Make sure you are viewing ALL channels (not FAVORITES) by pressing the GUIDE button on the remote.
- Check settings for Parental Controls or Channel Blocking.
- Verify the channel is included in the programming package you have subscribed to by calling TDS at 1-866-44-TDSTV.

## **HD Channels Are Missing**

- Refer to your TV Manual to ensure all cables are connected properly.

- Verify the HD channels are provisioned for your account by calling TDS at 1-866-44-TDSTV.

### ***No Sound***

- Verify that the volume is turned up.
- Verify that the TV is not on MUTE.
- Turn the TV off and turn back on.
- Verify that the audio cables are connected properly, and to the proper input on the TV.
- If your set-top box is connected through a device (e.g., surround sound, stereo, VCR) make sure the device is turned on and is set to the correct input.
- Unplug the power source to the set-top box for 30 seconds. Then, plug it back in and wait about 5 minutes for the set-top box to reboot.

### ***Poor Sound Quality***

- Verify that the audio cables are connected properly.
- If the problem is voice sync and your set-top box is connected via HDMI cables, unplug the power source to the set-top box. If the problem still persists, consider switching to component video and stereo audio cables instead of HDMI.

### ***Remote Control Not Working***

- Press the STB button on the remote to make sure the correct device has been selected.
- Check batteries to see if they need to be replaced.
- Verify that the set-top box, TV, and audio device

(e.g., surround sound, stereo, etc.) have power.

- If the problem is with control of a television or stereo (not the set-top box), try reprogramming the remote with the code list provided.
- Try using the remote on a different set-top box. If it works on a different TV, you should go back to the first set-top box and cycle the power by unplugging the power cable on the back of the set-top box. Wait 30 seconds and plug it back in.

### ***DVR Events Have Disappeared***

- The recordings that are oldest and not “protected” will be deleted if you run out of storage space.
- They may have inadvertently been deleted. Review Delete History to access a list of deleted recordings.



## **EMERGENCY ALERT SYSTEM (EAS)**

Your set-top box may be interrupted for Emergency Alert System (EAS) updates when watching regular TV channels, PPV, or Guide mode. The system will automatically change to the EAS alert channel when an EAS event occurs. The DTV guide is disabled during an EAS event.

# UNIVERSAL REMOTE CONTROL CODES

The Universal Remote Control that controls your TDS TV set-top box can be programmed to operate other devices such as your TV, DVD player, Home Theatre System, or VCR. Use the codes listed below to program your remote control to work with the additional devices.

## TV/DVD COMBO CODES

| <b>Brand</b> | <b>TV</b>  | <b>DVD</b> |
|--------------|------------|------------|
| Apex         | 1163       | 2095       |
| Broksonic    | 1114       | 2053       |
| RCA          | 1115, 1162 | 2063, 2099 |
| Sansui       | 1122       | 2071       |
| Sylvania     | 1150       | 2092       |
| Toshiba      | 1116       | 2054       |

## TV/VCR COMBO CODES

| <b>Brand</b> | <b>TV</b>  | <b>VCR</b> |
|--------------|------------|------------|
| Broksonic    | 1121       | 3081       |
| GE           | 1164       | 3090       |
| Quasar       | 1165, 1166 | 3091, 3092 |
| RCA          | 1167, 1168 | 3093, 3094 |
| Samsung      | 1161       | 3089       |
| Sylvania     | 1145       | 3095       |
| Toshiba      | 1006       | 3096       |
| Zenith       | 1118       | 3097       |

## TV/DVD/VCR COMBO CODES

| Brand     | TV         | DVD        | VCR        |
|-----------|------------|------------|------------|
| Panasonic | 1123, 1152 | 2075, 2076 | 3087, 3086 |
| RCA       | 1151       | 2077       | 3106       |
| Sharp     | 1153       | 2086       | 3100       |
| Sylvania  | 1027, 1124 | 2064, 2078 | 3105, 3088 |
| Toshiba   | 1154, 1158 | 2093, 2094 | 3099, 3098 |

## DVD/VCR COMBO CODES

| Brand     | DVD              | VCR              |
|-----------|------------------|------------------|
| Broksonic | 2072             | 3082             |
| Daewoo    | 2062             | 3076             |
| Emerson   | 2073             | 3083             |
| Go Video  | 2046, 2127, 2129 | 3066, 3110, 3109 |
| Hitachi   | 2126             | 3117             |
| JVC       | 2047, 2097       | 3067, 3118       |
| Panasonic | 2066             | 3078             |
| Philips   | 2051             | 3071             |
| Polaroid  | 2007             | 3111             |
| RCA       | 2048             | 3068             |
| Samsung   | 2049, 2074, 2085 | 3069, 3084, 3101 |
| Sanyo     | 2050             | 3070             |
| Sony      | 2065, 2067       | 3104, 3085       |
| Toshiba   | 2080, 2084       | 3103, 3102       |
| Zenith    | 2052, 2128       | 3072, 3119       |

## TV GROUP

| Brand | TV   |
|-------|------|
| Abex  | 1098 |

|               |  |
|---------------|--|
| Admiral       | 1001, 1099                               |
| Advent        | 1005, 1053, 1110, 1113                   |
| Adventura     | 1100                                     |
| Aiko          | 1015                                     |
| Aiwa          | 1034                                     |
| Akai          | 1002                                     |
| Alleron       | 1044                                     |
| Amtron        | 1036                                     |
| Anam National | 1003, 1036                               |
| AOC           | 1004, 1005                               |
| Apex          | 1111, 1119, 1163                         |
| Audiovox      | 1036                                     |
| Belcor        | 1004                                     |
| Bell & Howell | 1001, 1045                               |
| Benq          | 1042                                     |
| Bradford      | 1036                                     |
| Broksonic     | 1114, 1121                               |
| Brokwood      | 1004                                     |
| Candle        | 1004, 1007, 1100                         |
| Celebrity     | 1002                                     |
| Citizen       | 1004, 1007, 1015, 1036, 1073, 1097, 1100 |
| Colortyme     | 1004                                     |
| Concerto      | 1004, 1036                               |
| Craig         | 1036                                     |
| Crosley       | 1000, 1053                               |
| Crown         | 1036, 1053                               |
| Curtis Mathes | 1000, 1004, 1014, 1045, 1073, 1097       |
| CXC           | 1036                                     |
| Daewoo        | 1004, 1005, 1013, 1015, 1016, 1097, 1106 |
| Daytron       | 1004, 1097                               |

|             |  |
|-------------|--|
| Dimensia    | 1000   |
| Dumont      | 1160   |
| Dynatech    | 1004   |
| Electroband | 1002   |
| Electrohome | 1002, 1003, 1004, 1018, 1021   |
| Emerson     | 1004, 1011, 1013, 1025, 1028, 1031, 1033,<br>1036, 1044, 1045, 1080, 1097, 1101, 1102,<br>1107 |
| Envision    | 1004   |
| Fisher      | 1043, 1045, 1047, 1103   |
| Fujitsu     | 1044, 1029   |
| Funai       | 1036, 1044   |
| Futuretec   | 1036   |
| Gateway     | 1038   |
| GE          | 1000, 1003, 1004, 1008, 1021, 1048, 1049,<br>1063, 1068, 1094, 1144, 1164                      |
| Gibraltar   | 1160   |
| Goldstar    | 1004, 1005, 1011, 1018, 1050, 1090, 1091,<br>1097, 1098  |
| Grunpy      | 1036, 1044   |
| Hallmark    | 1004   |
| Harvard     | 1036   |
| Hisense     | 1112   |
| Hitachi     | 1004, 1011, 1012, 1051, 1052, 1084, 1085,<br>1086, 1087, 1102                                  |
| IMA         | 1036   |
| Infinity    | 1053   |
| Janeil      | 1100   |
| JBL         | 1053   |
| JCB         | 1002   |

|                    |  |
|--------------------|--|
| JC Penney          | 1000, 1004, 1005, 1007, 1012, 1021, 1048,<br>1049, 1058, 1063, 1068, 1072, 1073, 1075,<br>1097, 1098 |
| Jensen             | 1004   |
| JVC                | 1011, 1012, 1026, 1049, 1052, 1054, 1055,<br>1080, 1092, 1117, 1131                                  |
| Kawasho            | 1002, 1004   |
| Kenwood            | 1004, 1018   |
| Kloss<br>Novabeam  | 1036, 1056, 1057, 1100   |
| KTV                | 1036, 1097, 1101   |
| LG                 | 1005   |
| Loewe              | 1053   |
| Logik              | 1001   |
| Luxman             | 1004   |
| LXI                | 1000, 1004, 1045, 1053, 1058, 1068, 1075   |
| Magnavox           | 1004, 1007, 1018, 1053, 1056, 1057, 1059,<br>1060, 1083, 1110, 1147                                  |
| Majestic           | 1001   |
| Marantz            | 1004, 1051, 1053   |
| Megatron           | 1004, 1051   |
| Memorex            | 1001, 1004, 1005, 1022, 1045   |
| MGA                | 1004, 1005, 1018, 1021, 1047, 1061, 1062   |
| Midland            | 1049, 1068, 1097, 1098, 1160   |
| Minutz             | 1048   |
| Mitsubishi         | 1004, 1005, 1018, 1021, 1047, 1061, 1062,<br>1081  |
| Montgomery<br>Ward | 1001   |
| Motorola           | 1003, 1099   |
| MTC                | 1004, 1005, 1073   |

|                           |  |
|---------------------------|--|
| Multitech                 | 1036   |
| NAD                       | 1004, 1058, 1075, 1085   |
| NEC                       | 1003, 1004, 1005   |
| Net-Tv                    | 1040   |
| Nikko                     | 1004, 1015   |
| NTC                       | 1015   |
| Onwa                      | 1036   |
| Optimus                   | 1085   |
| Optonica                  | 1064, 1099   |
| Orion                     | 1023, 1033, 1107   |
| Panasonic                 | 1003, 1010, 1049, 1053, 1096, 1123, 1152   |
| Philco                    | 1003, 1004, 1005, 1007, 1011, 1018, 1053,<br>1056, 1057, 1059  |
| Phillips                  | 1003, 1004, 1007, 1011, 1017, 1018, 1053,<br>1056, 1057, 1059, 1060, 1063, 1110, 1126,<br>1129, 1148, 1155 |
| Pilot                     | 1097   |
| Pioneer                   | 1004, 1085, 1102   |
| Portland                  | 1004, 1005, 1015, 1097   |
| Price Club                | 1073   |
| Prima                     | 1113   |
| Prism                     | 1049   |
| Proscan                   | 1000, 1008, 1068, 1108   |
| Proton                    | 1004, 1011   |
| Pulsar                    | 1160   |
| Pulser                    | 1004   |
| Quasar                    | 1003, 1039, 1049, 1096, 1165, 1166   |
| Radio Shack               | 1000, 1045, 1098   |
| Radio Shack/<br>Realistic | 1004, 1011, 1036, 1045, 1064, 1097, 1098   |
| RCA                       | 1000, 1003, 1004, 1005, 1008, 1018, 1049,  |

|            |  |
|------------|--|
|            | 1065, 1066, 1067, 1068, 1069, 1070, 1071,<br>1082, 1102, 1104, 1106, 1108, 1115, 1151,<br>1162, 1167, 1168 |
| Runco      | 1160   |
| Sampo      | 1004, 1097, 1098, 1120   |
| Samsung    | 1004, 1005, 1011, 1014, 1018, 1019, 1072,<br>1073, 1074, 1097, 1098, 1156, 1161                            |
| Sansui     | 1023, 1107, 1122   |
| Sanyo      | 1045, 1062, 1095, 1103   |
| Scotch     | 1004   |
| Scott      | 1004, 1011, 1033, 1036, 1044   |
| Sears      | 1000, 1004, 1012, 1018, 1044, 1045, 1047,<br>1055, 1058, 1068, 1075, 1076, 1103, 1105                      |
| Sharp      | 1004, 1009, 1011, 1025, 1064, 1077, 1078,<br>1097, 1099, 1153, 1157  |
| Shogun     | 1004   |
| Signature  | 1001   |
| Simpson    | 1007   |
| Sony       | 1002, 1109, 1137   |
| Soundesign | 1004, 1007, 1036, 1044   |
| Squareview | 1105   |
| SSS        | 1036   |
| Starlite   | 1036   |
| Supre-Macy | 1100   |
| Supreme    | 1002   |
| Sylvania   | 1004, 1007, 1018, 1027, 1053, 1056, 1057,<br>1059, 1060, 1124, 1145, 1150                                  |
| Symphonic  | 1024, 1031, 1036, 1105   |
| Tandy      | 1099   |
| Tashiko    | 1058   |



|                       |  |
|-----------------------|--|
| Tatung                | 1003   |
| Technics              | 1049   |
| Techwood              | 1004, 1049   |
| Teknika               | 1001, 1004, 1005, 1007, 1011, 1012, 1015,<br>1036, 1044, 1060, 1073, 1096, 1097                |
| Tera                  | 1004, 1011   |
| TMK                   | 1004   |
| Toshiba               | 1006, 1045, 1058, 1073, 1075, 1079, 1093,<br>1116, 1154, 1158, 1159                            |
| Totevision            | 1097   |
| Universal             | 1048, 1063   |
| Victor                | 1055   |
| Vidtech               | 1004, 1005   |
| Viking                | 1100   |
| Wards                 | 1000, 1001, 1004, 1005, 1018, 1031, 1044,<br>1048, 1053, 1056, 1057, 1059, 1060, 1063,<br>1064 |
| White<br>Westinghouse | 1013   |
| Yamaha                | 1004, 1005, 1018   |
| Zenith                | 1001, 1089, 1118, 1125, 1161   |

## HDTV CODES

Apex-1088  
Daewoo-1135  
Dell-1141, 1142, 1146  
Mitsubishi-1032  
Philips-1126, 1129  
Proscan-1000  
RCA-1143  
Sampo-1038  
Samsung-1019  
Sony-1037, 1128, 1137  
Zenith-1020, 1139

## LCD TV CODES

Benq-1136  
NET-TV-1040  
Sharp-1138  
Sylvania-1046

## PLASMA TV CODES

Acer-1041  
Fujitsu-1029  
Gateway-1038  
Pioneer-1035  
Viewsonic-1038, 1149

## PROJECTION TV CODES

Hitachi-1030, 1132, 1133,  
1134  
JVC-1130, 1131  
Panasonic-1140  
Toshiba-1127

## DVD GROUP

### DVD

Aiwa-2026, 2131  
Apex-2001, 2056, 2057,  
2061, 2095, 2098  
Audiovox-2132  
Blaupunkt-2136  
BOSE-2122, 2130  
Broksonic-2053, 2072  
Clarion-2100  
Classic-2101  
Cyberhome-2083

### Portable DVD

Daewoo-2058, 2062, 2137,  
2138  
Denon-2110, 2133, 2040  
Emerson-2002, 2059, 2073  
Fisher-2112, 2134  
Funai-2002  
GE-2079, 2118, 2041  
Go Video-2046, 2127, 2129,  
2124

**Network DVD**

GPX-2114  
Harmon Kardon-2125  
Hitachi-2000, 2027, 2126  
Irradio-2149  
JVC-2017, 2028, 2047, 2090,  
2096, 2097, 2115  
Kenwood-2142, 2148  
Konka-2029, 2030  
Koss-2060  
Lasonic-2081  
Magnavox-2002, 2018,  
2033, 2089  
Marantz-2143  
Memorex-2003  
Mintek-2004  
Mitsubishi-2019, 2123, 2145,  
2147  
NAD-2059, 2139  
Nakamichi-2116  
Nexotech-2140  
Norcent-2005, 2117  
Onkyo-2006  
Orifron-2009  
Panasonic-2031, 2066,  
2075, 2076, 2104, 2105,  
2106, 2111  
Phillips-2018, 2032, 2033,  
2045, 2051, 2091, 2109  
Pioneer-2008, 2021

Polaroid-2007  
Proscan-2010, 2118, 2144  
Qwestar-2009  
RCA-2010, 2048, 2063,  
2077, 2099, 2107, 2118  
RCA-2055

**Portable DVD**

Sampo-2119  
Samsung-2012, 2049, 2074,  
2085, 2102  
Sansui-2071  
Sanyo-2034, 2050, 2120  
Sharp-2013, 2015, 2044,  
2086, 2082  
Sherwood-2121  
Sony-2014, 2020, 2022,  
2065, 2067, 2068, 2069,  
2070, 2087, 2103, 2108,  
2113  
Sylvania-2002, 2064, 2078,  
2092  
Techwood-2141  
Toshiba-2023, 2025, 2037,  
2038, 2040, 2041, 2054,  
2080, 2084, 2088, 2093,  
2094  
Toshiba-2135  
Venturer-2011  
Yamaha-2106, 2146  
Zenith-2039, 2052, 2128

## AUX GROUP

### Amplifier Codes

Aiwa-6003, 6020

Carver-6002

Citizen-6026

Denon-6014

Fisher-6002

GE-6028

Goldstar-6016, 6021

Harman Kardon-6013

Hitachi-6034

JVC-6018, 6024

Kenwood-6015, 6022

Maganvox-6035

Marantz-6000

Nakamichi-6012

NEC-6033

Onkyo-6005, 6006, 6017

Optimus-6008

Panasonic-6001

Pioneer-6004, 6009, 6010,  
6023, 6036

Proton-6035

Quasar-6001

RCA-6025

Sharp-6029, 6030, 6031,  
6032

Sherwood-6011

Sony-6020

Teac-6019

Technic-6001

Technics-6001

Toshiba-6027

Victor-6024

Yamaha-6007

## HOME THEATER IN A BOX (HTIB)

| Brand     | Audio | DVD  |
|-----------|-------|------|
| Bose      | 4000  | 2130 |
| JBL       | 4001  | 2043 |
| JVC       | 4002  | 2035 |
| Koss      | 4003  | 2060 |
| Onkyo     | 4004  | 2024 |
| Panasonic | 4005  | 2104 |
| Philips   | 4006  | 2036 |
| Pioneer   | 4007  | 2016 |

|          |            |            |
|----------|------------|------------|
| RCA      | 4008       | 2042       |
| Sony     | 4009, 4010 | 2113, 2108 |
| Venturer | 4011       | 2011       |

## RECEIVER/TUNER CODES

Aiwa-5000, 5001, 5002,  
 5004, 5005, 5006  
 Bose-5007  
 Carver-5000  
 Denon-5008  
 Harman Kardon-5000, 5009  
 JBL-5009  
 JVC-5010  
 Kenwood-5011, 5012, 5013  
 Linn-5000  
 Maganvox-5000  
 Marantz-5000  
 Onkyo-5018  
 Panasonic-5019, 5020  
 Philips-5000  
 Pioneer-5021, 5022  
 RCA-5024, 5025, 5026  
 Sansui-5000  
 Sherwood-5027  
 Sony-5017, 5023, 5028,  
 5029, 5030, 5031, 5032,  
 5033  
 Technics-5016, 5019, 5020

Wards-5000, 5021  
 Yamaha-5003, 5014, 5015,  
 5021

## VCR CODES

Admiral-3001  
 Adventura-3021  
 Aiwa-3021  
 Akai-3003, 3055, 3058  
 Audio Dynamics-3005, 3006  
 Bell & Howell-3007  
 Broksonic-3081, 3082  
 Candle-3011, 3013, 3014  
 Canon-3016  
 Carver-3036  
 Citizen-3011, 3013, 3014  
 Colortyme-3005  
 Curtis Mathes-3000, 3005,  
 3014  
 Daewoo-3011, 3013, 3021,  
 3076  
 DBX-3005, 3006  
 Dimensia-3000  
 Dynatech-3021  
 Electrohome-3023

|   |  |
|---|--|
| Emerson-3003, 3011, 3021,<br>3023, 3038, 3083         | MGA-3023, 3038   |
| Fisher-3007, 3029, 3030                               | Minolta-3052   |
| Fuji-3058   | Mitsubishi-3023, 3038, 3039,<br>3060, 3108                           |
| Funai-3002, 3021                                      | Montgomery Ward-3001   |
| Garrard-3021  | Motorola-3001  |
| GE-3000, 3059, 3090                                   | Multitech-3021   |
| Go Video-3066, 3073, 3109,<br>3110                    | NEC-3005, 3006, 3007,<br>3014, 3055, 3060                            |
| Goldstar-3005, 3014                                   | Optimus-3001   |
| Gradiente-3021  | Optonica-3047  |
| Harley Davidson-3021                                  | Orion-3004   |
| Harman Kardon-3005                                    | Panasonic-3053, 3062,<br>3063, 3077, 3078, 3079,<br>3086, 3087, 3107 |
| Headquarter-3007                                      | Pentax-3052, 3059  |
| Hitachi-3052, 3055, 3059,<br>3117                     | Pentex Research-3014   |
| JC Penney-3005, 3006,<br>3007, 3030, 3036, 3052       | Philco-3036, 3037  |
| Jensen-3055   | Phillips-3036, 3047, 3061,<br>3071                                   |
| JVC-3005, 3006, 3007, 3014,<br>3055, 3060, 3067, 3118 | Pioneer-3006, 3060   |
| Kenwood-3005, 3006, 3007,<br>3014, 3055, 3060         | Polaroid-3111  |
| Lloyd's-3021  | Portland-3013  |
| Magnavox-3036, 3037,<br>3051, 3061                    | Proscan-3000   |
| Marantz-3005, 3006, 3007,<br>3014, 3036               | Pulsar-3051  |
| Memorex-3001, 3004, 3007,<br>3021, 3051               | Quarter-3007   |
|   | Quartz-3007  |
|   | Quasar-3062, 3091, 3092  |
|   | Radio Shack-3001, 3047   |
|   | Radio Shack/Realistic-3007,  |

3021, 3023, 3029, 3047  
RCA-3000, 3003, 3040,  
3041, 3042, 3052, 3059,  
3062, 3068, 3075, 3093,  
3094, 3106  
Realistic-3001, 3007, 3011,  
3021, 3023, 3029, 3047  
Ricoh-3064  
Runco-3051  
Samsung-3011, 3069, 3084,  
3089, 3101  
Sanky-3001, 3051  
Sansui-3004, 3006, 3055,  
3060  
Sanyo-3007, 3070  
Scott-3011, 3038  
Sears-3007, 3029, 3030,  
3052,  
Sharp-3001, 3013, 3023,  
3047, 3080, 3100  
Shintom-3048, 3058  
Signature-3001  
Singer-3064  
Sony-3048, 3049, 3058,  
3085, 3104  
STS-3052  
Sylvania-3021, 3036, 3037,  
3038, 3061, 3088, 3095,  
3105  
Symphonic-3002, 3021  
Tandy-3007  
Tatung-3055  
Teac-3021, 3042, 3055  
Technics-3053  
Teknika-3021, 3050  
Tivo-3074  
Toshiba-3011, 3029, 3030,  
3038, 3096, 3098, 3099,  
3102, 3103  
Vector Research-3005, 3006,  
3011  
Victor-3006  
Video Concepts-3005, 3006,  
3011  
Wards-3001, 3011, 3021,  
3023, 3047, 3052  
White Westinghouse-3002  
XR-1000-3021  
Yamaha-3005, 3006, 3007,  
3014, 3055  
Zenith-3048, 3051, 3058,  
3064, 3072, 3097, 3119



Broadband. Digital TV. Phone.

**615-773-9033**

[www.tdstv.com](http://www.tdstv.com)